

A FIRST  
Class Park 6

10 Celebrating  
UNITY

MY CROWN  
is in My Heart 12



# Liberty

2019 DONOR REPORT EDITION



Personal  
Touch

WINTER 2020



## Following God's Example

By Pastor Henrik Sonntag

**As a Lutheran pastor, I am continually aware of the miraculous works that God can accomplish through us. Having been born in Zwickau, which was then**

located in East Germany, I grew up under communism and saw the fall of “the wall” when I was in high school. I am thankful for the ministry of the Church during a time of oppression, and consider myself fortunate that God found me in the midst of communism through the faith of my grandmother. To me, this is an example of how God reaches out to us through the people around us.

When I became the pastor at St. Paul's Lutheran Church in Glenside in 2009, I was introduced to Lutheran Disaster Response – Eastern Pennsylvania (LDR-EPA), a branch of Lutheran Congregational Services, which had been working with several other organizations in the area. Almost immediately, our congregation saw the potential to create a fundraising event to support LDR-EPA's mission to help people recovering from a disaster.

With our faith's roots in Germany, the concept of an Oktoberfest instantly became obvious. As a German, I find gratification and am thankful for all our volunteers who put so much hard work into ensuring the event's authenticity.

Now, more than ten years on, our Oktoberfest has become one of the largest events in Glenside, drawing people from throughout the area. Families come to enjoy festive drinks, food, and games from local vendors and breweries. Since its foundation, we have successfully raised more than \$161,674.00 for LDR-EPA, while members of our congregation continue to give their time to long-term recovery efforts such as Camp Noah, which teaches resiliency skills to children recovering from disaster through fun and engaging activities.

The good works put forth by LDR-EPA are living demonstrations of walking with others through times of struggle, just as our Lord Jesus walks with those encountering difficulty.

When there is a crisis, such as flooding in Susquehanna County, or a massive storm such as Hurricane Maria, LDR-EPA is always quick to respond. Whether a tragic event is at our doorstep or in far off reaching places, they engage congregations and communities to give back to assist people in need.



*Above: Pastor Sonntag at Oktoberfest with his wife Jean, and their children, Benjamin and Julia.*

What's more, is that their support continues long after the initial disaster. While other organizations may be in a disaster zone for weeks, months, or more, Lutheran Disaster Response often stands by recovering families for years after these tragic events.

For many recovering from disaster, such as the thousands of people displaced from Hurricane Maria, piecing lives back together is not an instantaneous process. Here we are, several years later, and the storm continues to take a toll. Fortunately, LDR-EPA continues to be a resource for those who lost homes and jobs, and who continue to go without basic common necessities.

This is why the St. Paul's congregation continues to support LDR-EPA – because their work embodies the principles of our Church. Jesus called upon us to love and care for one another, to give charitably to those in need – to touch one another's lives. Every day, we see that lived out by Lutheran Congregational Services and Lutheran Disaster Response – Eastern Pennsylvania.

## Table of Contents

### Family of Services

#### Why I Give

- 2 Following God's Example

#### Up Front

- 3 A Personal Touch

#### Liberty Briefs

- 4 No Time to Kick Your Feet Up  
5 Making Every Moment Extraordinary  
6 A First Class Park  
8 A Personal Touch in Healing  
9 Warm, Welcoming, and Winning: Monte Carlo Night

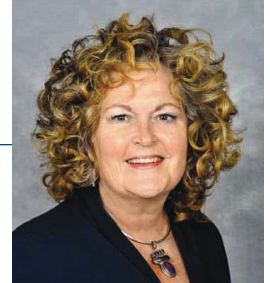
- 10 Celebrating Unity, Honoring Togetherness  
12 My Crown is in My Heart  
13 Meeting People Where They Are

#### Mission in Action

- 14 Revenue and Expenses  
16 Our Donors, Our Heroes  
21 President's Circle  
23 Legacy Society

## Up Front

### Greetings from the President



# A Personal Touch

Liberty Lutheran enjoyed another banner year in 2019. Thanks to the dedication of our donors, and the inspired support from the people we serve, we've been able to strengthen our position as an industry leader. What's more, our staff is second to none and has been instrumental in meeting our high customer service standards, positioning us as a world-class organization.

Throughout the past year, our affiliates have endeavored to create programs and services and pursue projects that have depended upon the personal touches of many individuals. Within this issue of *At Liberty*, we share how these contributions have made an impact.

In adding a personal touch to a fundraising campaign, a project, an event, or a program we give a part of ourselves and create a stronger connection with what Liberty has to offer. This is a defining aspect of world-class excellence. We don't settle for simply establishing such efforts, we invest ourselves in them and make them our own – we are connected to them.

I am grateful that you continue to connect with Liberty Lutheran and our family of services. The many ways in which you continuously contribute and support our organization has positively impacted nearly 36,000 individuals in 2019, which is an additional 2,000 more people than in 2018.

When I reflect on this past year, I continue to be in awe of what our family of services is able to achieve thanks to your continued support. Reflecting on this, I have a renewed faith and confidence for the future and our ability to serve our residents, members, patients, and their families. Thank you for adding your personal touch, and for helping us fulfill our mission to faithfully accompany others during their life journey.

Luanne B. Fisher, PhD  
President and CEO, Liberty Lutheran



#### LIBERTY LUTHERAN

##### BOARD OF DIRECTORS

Beverly Bortz, Vice Chair  
Linda Breckenridge  
Max Buchheister  
Paul Engstrom  
Luanne Fisher, President  
Pete Gutekunst  
James Himler  
Fred Hopke, Chairman  
Richard Hoy  
LaVerne Jones  
Robert Keddie, Treasurer  
Wayne Matthias-Long  
Frank Roth  
Evan Speece  
Pamela Steitz  
David Stettler  
Gwen Webster, Secretary  
David Young  
Paul Zieger

#### EDITORIAL STAFF

##### SENIOR EDITORS

Carter Bowman  
Patty Cline  
Mark Ladley  
Nicole Tarkoff

##### DESIGN

Chad Miller

#### LIBERTY LUTHERAN

7002 Butler Pike  
Ambler, PA 19002  
p 267-464-7700  
[www.LibertyLutheran.org](http://www.LibertyLutheran.org)

## THE MANOR *at York Town*

# No Time to Kick Your Feet Up

**F**or many older adults, retirement isn't just a time for leisure – although there's plenty of that to enjoy at The Manor at York Town – it also presents opportunities to give back and serve others. This is particularly true for Elisabeth Robbins, who was among the first residents to move into the community in 2003.

"I'm not the type to kick up my feet. When I told my friends and family that I was considering retirement, they said 'You're going to hate it,'" Elisabeth says with a smile on her face. "I've always been an active person. I was a mathematician. I graduated from college and I got a job with General Electric. It was in the late 1950s during the Cold War, and I worked on nose cones for intercontinental ballistic missiles. I also worked on spaceships, including the first craft we sent up. After that, I went to Philco Ford and worked on the first color television sets. Then I went with Univac and did a lot of different things, including working on the storm sewers in San Francisco. So settling down was never an option for me."

Building on such a prolific career, Elisabeth now dedicates her time and energy to helping underserved



*Above: Humbled by the generosity of her neighbors at The Manor, Elisabeth shows off the extensive collection of clothes donated for ANA.*

Native American communities. For the past six years, she has organized a community clothes collection for Americans for Native Americans (ANA).

"The connection to ANA is slightly personal to me because my great-grandmother was Mohawk, and my husband's grandmother was Tuscarora. When I found out about the organization, it really interested me," Elisabeth shares. "Several years ago, around the time I found out about ANA, we had a community meeting of Manor residents. We wanted to do something for a charity but nobody had any ideas. So I suggested we collect clothes for Native American children."

"The collection goes to children on the Navajo and Zuni Reservations in Arizona and New Mexico, and the need varies from year-to-year," Elisabeth explains. "One year there was a need for boy's clothes. Another year, there was a request for baby items – clothes, diapers, shampoo, cream, you name it. It's really striking what they need, and it makes you realize that you've been fortunate and have the power to make a difference."

As an independent living community, The Manor offers opportunities for residents to remain active with a fulfilling sense of purpose through giving back and touching the lives of others.

"The collection seems to get bigger and bigger. The last several years have been fantastic. We have a great community here that keeps us active and involved," says Elisabeth. "I seem to be busy all the time."





# Making Every Moment Extraordinary



*Above: Sarah sings alongside resident, Jenny, in Inspiration Café.*

*Left: Sarah makes every day extraordinary with residents at Artman.*

A fitting name, Inspiration Café continues to be Artman's quaint and cozy relaxation retreat where residents, family, and staff, exchange friendly conversations over comforting, sometimes caffeinated, refreshments. Every Wednesday morning, Inspiration Café is full of joy and reminiscence, as memory care residents share smiles and laughter in Artman's extra-ordinary music therapy program.

Extra-ordinary is the word that Music Therapist, Sarah Biedka, likes to use to describe the community at Artman. As Sarah engages residents from all levels of care in music therapy programs, she provides opportunities that benefit their well-being in innumerable ways. In fact, according to the American Music Therapy Association, music therapy can increase self-awareness and sense of control, reduce anxiety and stress, promote emotional connection, enhance memory, and improve communication.

Ready to make every Wednesday extra-ordinary, Sarah and memory care residents gather around the piano, preparing to benefit their health and well-being. Sarah begins her program by connecting music to geographic locations. Unraveling a map across Inspiration Café's table for memory care residents to ponder, Sarah asks the places they've been to throughout the U.S. and residents reply with the various cities they recall visiting throughout their lifetime.

Sarah points to the place on the map they currently reside. "We're here in Ambler," she says. Reflecting on the

differences between the places residents have been from past to present, Sarah says much of her memory care music therapy programs center around reminiscence. "I use reminiscence as a way for residents to understand who they used to define themselves as, and who they are now," she explains.

As Sarah guides the program along, she prompts memory care residents to be present in the moment. Playing the song, "Oh What a Beautiful Morning," memory care resident, Jenny, smiles as she stands beside Sarah at the piano, waving her hands and singing along.

"Did you have a beautiful morning?" Sarah asks Jenny.

Jenny excitedly replies, "Yes!"

Sarah asks, "What was beautiful about it?"

"People treat me so nicely," Jenny says as she smiles. Another memory care resident, Betty, chimes in, "I had a beautiful morning," she says. "What was beautiful about it?" Sarah asks. Betty kindly answers, "All of you people!"

Familiar tunes bring feelings of comfort and joy as memory care residents shape an understanding of their personal identities while being an important part of their community. "My motivation has been to make sure that regardless of your context in life, you always receive an outstanding level of compassionate care." With compassion as her driving source of motivation, Sarah continues to spread light, laughter and a sense of belonging throughout the community at Artman.

# The Village

AT PENN STATE



## A First Class Park



**I**n September, The Village at Penn State celebrated the completion of an eagerly anticipated project – Palmer Park. Thanks to the support of our generous donors, residents, staff, and partners, the Park has become a hub for activity, reflection, and relaxation.

Personal touches were added by supporters to memorialize their support for the project, and to remember loved ones. These personal touches came in the shape of engraved bricks, a grand clock, a fountain, and more.

Designed by the Arnold Palmer Design Company, the park's development was announced in the summer of 2013 and features a village green for group activities and entertainment, beautifully landscaped pathways, fountain, fire pit, bocce court, and a putting green.

"I love to golf, and I haven't been able to get to a course for the last year. The addition of the putting green has been tremendous," Anneke Fleming, a resident, shares. "I had missed playing golf, but now everything is so convenient. It's all laid out for us. The holes even have special cups that catch the ball, so we don't have to bend down too far to get it, which is great for the residents."

For Anneke, who has lived at The Village for more than six years, Palmer Park is a fabulous addition. "I was elated when I found out about Palmer Park," she says. "It has turned into something so wonderful. I remember turning to my husband and saying 'This is beginning to look like a country club.'"

*Palmer Park, a first-of-its-kind park and gardens, reflects the beauty and vibrancy of The Village.*

*Palmer Park offers beautiful walkways, a putting green, and commons space for activities and gatherings.*



For residents like John and Veda Kay Black, Palmer Park is the perfect place to enjoy time with their grandchildren. “We’ve used the village green in the park to play croquet with our grandchildren. I’ve also played some golf with one of our grandchildren. It’s a great addition for our family, and the entire community,” John says.

“We really enjoy walking in the park after supper. If the evening is cool, we’ll gather around the fire with some of the neighbors. It’s a wonderful way to end the day,” Veda Kay shares. “We’ll also just knock on a neighbor’s door and say ‘Come out and play some bocce.’ The Park has definitely added to the lifestyle and options here.”

*Below, top left: Mary Klemick and PollyAnne Fletcher enjoy a game of croquet.*

*Bottom left: Hazel France and Judy Swisher sharpen their putting game.*







## A PERSONAL TOUCH IN HEALING

Those who serve in Liberty Lutheran's Hospice Care Program have a unique calling. **Ceria Woodrit**, a *Liberty Hospice* volunteer, counts herself among those who bring compassion and comfort through the practice of Reiki therapy.



*Ceria has a knack of bringing peace and comfort to patients through the art of Reiki.*

"I was introduced to Reiki in October of 2017 following the passing of my father," says Ceria. "After regular self-treatment, I noticed a huge change in my feelings of depression, loss, and the grief I had been experiencing before"

"In the same way, I have seen a complete turnaround in clients who were experiencing deep depression and grief from losing loved ones of their own. I have clients who receive Reiki to open, clear, and balance their chakras from past traumas. This balancing helps with everything from mental clarity and inner peace to body pains, relaxation, and even creativity." Reiki is a holistic, gentle addition to medical therapy where

the therapist channels beneficial energy into the recipient.

Colleen Eppinger, the volunteer coordinator with Liberty at Home, has witnessed Ceria's work in action. Andrea, a patient of Liberty's, was unable to sit up on the side of her bed due to chronic pain in her legs. "I was there when Ceria performed Reiki on Andrea," Colleen explains. "She quickly relaxed, and **you could physically see where energy in her body became unblocked** via muscular response. After the session, Andrea was able to sit up on the side of her bed and regain her balance."

When asked about who is best

suited to receive Reiki therapy Ceria responds, "my personal experience with Reiki would be there are no limits to what Reiki can do if you're open to receiving."

Prior to treatment, Ceria will discuss with patients what Reiki is as well as what specific areas that they would like to focus on in their sessions. No doubt it is Ceria's empathetic touch that puts recipients at ease to try this ancient Japanese practice. By offering her talent and compassion to those on hospice, Ceria is impacting lives through her Reiki therapy and bringing positivity to every home that she visits.





# Warm, Welcoming, and Winning: Monte Carlo Night

On October 19th, the West Philadelphia Senior Community Center held its first Monte Carlo Night raising money to benefit its members through additional programs that promote the social, physical, and spiritual wellbeing of older citizens in Philadelphia. Rather than fall back on the formats of events from previous years, the leadership at the WPSCC brought a new level of decadence and fun to the evening. Guests were invited to choose from a plethora of casino-style games including slot machines, roulette, craps, and blackjack. Once winnings were secured, everyone was ushered into the dining area for a delicious dinner of breaded chicken, salad, and hand-crafted cocktails. A three-piece jazz band set a dulcet tone in the background.

“We were extremely pleased by the turnout,” says Rose Richardson, executive director for the Center. “Especially with the event being the first of its kind, the response will do a whole lot of good for the community center as well as its visibility.”

“Everyone here did so much to make the event their own,” adds Patrice Rhodes, administrative assistant for WPSCC. “There was a lot of time and care put in, and I think that shows.”

Time and care appear to be understatements—an ice sculpture, donated by a local Philadelphia business, gleamed from the center of the gaming floor throughout



*Guests went all in during Monte Carlo Night. Blackjack and slot machines were among the most popular games.*

the night. Donors from the neighborhood, including the Philadelphia Corporation for Aging, came out for the evening as well and were welcomed with the WPSCC’s usual hospitality and cheer.

“It felt so much like a real casino!” says Helen Bundy, an active member of the community center. “I could have played games all night if they would have let me. I have been a member at the center for over twelve years, since they started, and never seen anything to this level. People ask me what I do with my retirement, I tell them I head to the center and have never come up short on things to keep me interested.”

The West Philadelphia Senior Community Center is truly a place where personalities, care, and passion are given their stage to shine, especially during events like the Monte Carlo Night fundraiser.



# Celebrating Unity, Honoring Togetherness

**S**urrounded by the tranquility that flourishes in Little Mary's Azalea Garden, the Paul's Run unity mosaic brings memories of togetherness and joy to all of those who call this community home. October 16th marked the official unveiling of this beautiful work of art, when residents, volunteers, staff, friends and family celebrated the completion of a masterpiece that will forever bring the community of Paul's Run together.

As the curtain dropped to reveal this remarkable mosaic for the very first time, smiles brightened and joy filled the air. At the celebration following the unveiling, residents who worked alongside one another on the mosaic took center stage to share their sentiments and pride. Resident Crista McGill expressed feelings of gratitude and faith. "It is truly amazing that we could come together and believe that this would eventually be something great. We trusted one another and had faith that each part would amount to something beautiful, something wonderful," Crista says.

As the many broken bits of glass and ceramic items came together to make one momentous work of art, the people of Paul's Run came together too. "It was a time of true joy," Sister Norbert says, a resident of Paul's Run who spent many hours working on this special project. "We all have down days from time to time. It is good to give each other hope and to help one another," she says smiling at the friends beside her.

Pat Gallagher, the local artist who designed the mosaic, says that she will always cherish the stories shared and memories made while working with this community. "I leave a concrete piece here for you and each day you have a new memory when you admire it."

"There are so many tiny treasures and little gifts that you all have shared with me, and even though I was considered the teacher, I have learned so much from all of you," Pat says to the friends, families, and neighbors of Paul's Run who helped create this wonderful work of art.

With over 105 friends, families, and neighbors throughout the community coming together to complete this project, each individual listened, shared, and learned from one another. The Paul's Run Unity Mosaic now resides in Little Mary's Azalea Garden where the friends, families, and neighbors of Paul's Run who pass by and gather, admire its beauty and the many memories that continue to bring this community together.



*Opposite page*

*Top row*

*Left: Lydia enjoys placing different pieces together.*

*Middle: Arnie works diligently to create the mosaic's blue sky.*

*Right: Michael and Brandon, art students, help lay out the finished pieces.*

*Bottom row*

*Left: Student nurses apply the grout that holds everything together.*

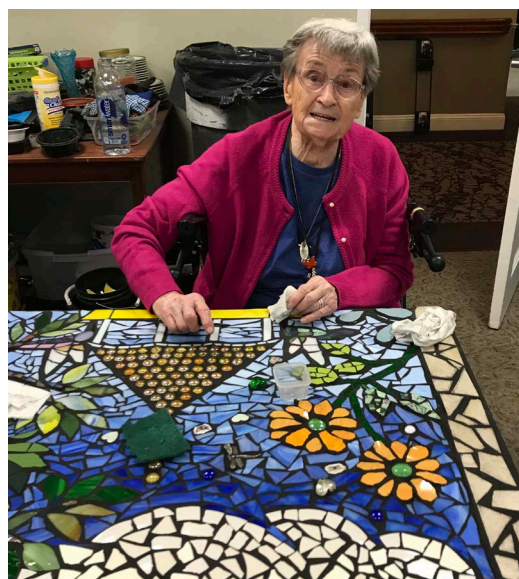
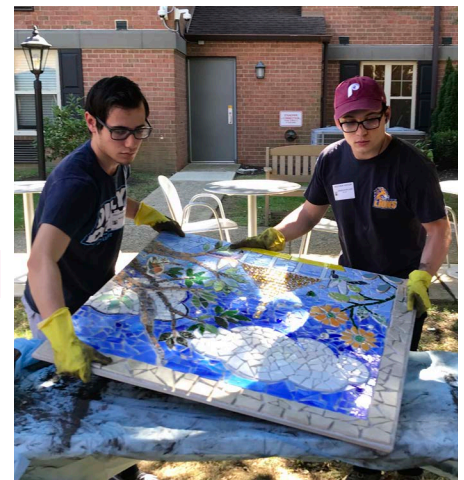
*Middle: Sister Margaret makes sure the mosaic shines.*

*Right: Pat and Edna place the final piece on.*





*Left: Artist, Pat Gallagher, admires the beautifully finished mosaic hanging in Little Mary's Azalea Garden.*







## My Crown is in My Heart

Each Friday afternoon, The Hearth's modern movie theatre takes a step back in time as residents of The Shakespeare Club gather together to explore plays written by one of the world's most famous dramatists. Delving into cherished classics, and reading new Shakespeare plays each month, members of The Hearth's Shakespeare Club greatly enjoy their weekly get-togethers, and the banter between their Shakespearian discussions is always engaging.

Many of the club members joined the group because they wanted to further their Shakespearian knowledge. "I only read so much of Shakespeare in high school," says club member and resident at The Hearth, Mary Carbone. "I really just wanted to expand my horizons." Resident, Grace Lewis, notes that she had a wonderful professor in college who heightened her interest in the notorious writer, and she's happy to revisit the plays of her past.

All together, the ladies of The Shakespeare Club have read 15 plays in total, and for the most part they've enjoyed every one of them. From *Othello* to *The Taming of the Shrew*, club members have read numerous character roles in a variety of genres including comedy, romance, and tragedy.

"It's very intellectually stimulating," says club member,



Above: The ladies of the Shakespeare Club meet in The Hearth's movie theatre to read their favorite plays.

Nancy Partridge. "And of course, fun," she smiles. "It's really about the company," Grace adds. "We enjoy spending time together and we can comment and laugh when Shakespeare might get racy or taboo." Mary nods her head in agreement chuckling from across the room.

The Shakespeare Club is pleased to have finished their most recent play of *King Henry VI*, as it concludes their series in reading both the fourth and fifth plays previously. "The King Henry plays were tough," Nancy remarks noting the tragedy that takes place, but Shakespeare's balance of compassion and ferocity in the character of King Henry VI provides for an entertaining read.

In one of the play's most famous lines, King Henry VI says, "My crown is in my heart. Not on my head." The ladies of The Shakespeare Club wear their crowns in their hearts as well, as they enjoy sharing their unique perspective on Shakespeare's plays, and bringing their personal touch to every meeting.

Although the group enjoyed reading the various King Henry plays, they're seemingly ready for a different genre. "I think it's time for a comedy," Nancy says. Nancy suggests reading *Much Ado About Nothing* for the group's next play, and they all sound enthused with her idea.

As the ladies look forward to a lighter plot in *Much Ado About Nothing*, the complexities of Shakespeare continue to bring this group together. And the meaningful friendships they've formed along the way continue to strengthen and grow.





## Meeting People Where They Are



**“Lay Eucharistic Visitor Training is a side to ministry that we take for granted, but one that so many people desperately need,” says Sandra Brown,**

*pastor at Peace Lutheran Church of Bensalem.* She speaks with a warm respect for those who help to extend the hands of the church through the training. These classes impart the knowledge and resources needed for attendees to administer the sacrament of communion for all who wish to partake—particularly those who are unable to make it to church services due to health reasons.

“By training others, **we are able to keep up relationships with those who could be easily overlooked or forgotten.** It means so much to them, and I think it has a profound impact on those who administer the sacrament as well,” Sandra adds.

Lay Eucharistic Visitor Training is funded by Liberty Lutheran and includes a history of communion, its significance, and role-playing exercises so that participants may become accustomed to the tradition. After training, graduates are sent into the field and quickly find themselves connecting with people at all stages of life.

“Participants in the program will frequently find themselves meeting recipients in hospitals, personal care centers, and especially their own homes,” notes Julia Menzo, director of community outreach at Lutheran

Congregational Services. “This allows for relationships on a more spiritual level that really brings a sense of holiness to what can otherwise be a mundane or difficult world.”

Teresa Fry, a volunteer who has been serving for several years now comments: “We have developed strong and meaningful relationships with our seniors who can’t come to church. Communion is very important to them, and it helps each one feel connected to their church and to God.”

Sandra Brown reports that Lay Eucharistic Visitor Training seminars are offered up to two or three times a year based on demand, and that she is happy to see so many people willing to step into the role.

“Our job is to train those entering others’ homes to look for indications that person is being taken care of. We want to prepare them to seek out the right people so that those in vulnerable situations can be taken care of,” adds Sandra Brown.

**With so many volunteers bringing compassion to every house or hospital they visit, there is a tangible sense of love and dignity shared by all who have gone through the training.**

## Revenue



**\$75,651,152**  
COMPASSIONATE CARE  
(93%)



**\$1,383,923**  
GOVERNMENT PROGRAMS  
(2%)



**\$220,140**  
COMMUNITY CARE  
(<1%)



**\$129,150**  
GRANTS  
(<1%)



**\$443,818**  
WELLNESS  
(1%)



**+ \$3,250,503**  
OTHER  
(4%)

---

**= \$81,078,686**  
Total Revenue

## Expenses



**\$44,005,708**  
PROGRAM SERVICES  
(53%)



**\$12,898,655**  
GENERAL AND ADMINISTRATIVE  
(16%)



**\$7,202,197**  
DEPRECIATION  
(9%)



**\$4,051,634**  
INTEREST  
(5%)



**\$1,621,651**  
LIABILITY INSURANCE  
(2%)



**\$446,226**  
DEVELOPMENT  
(1%)



**+ \$12,512,000**  
BENEVOLENCE FUNDED  
(15%)

---

**= \$82,738,071**  
Total Expenses



**\$1,659,385**  
Loss from  
Operations



**+ \$1,537,750**  
Net Gain on  
Investments



**+ \$768,055**  
Other  
Contributions

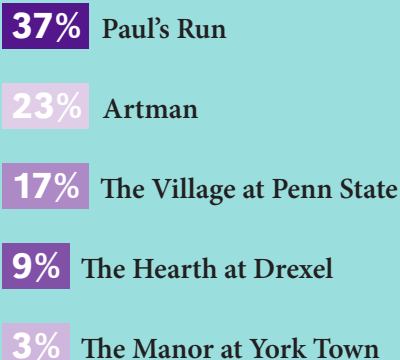
**= \$646,420**

Change in  
Net Assets

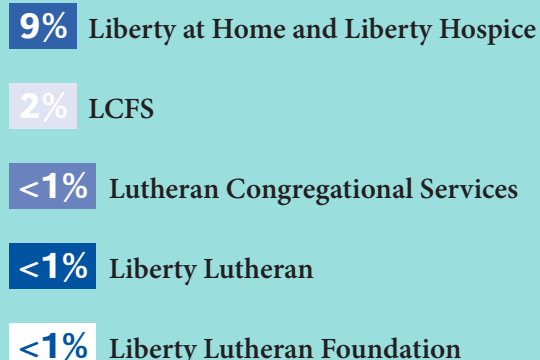


## Revenue by Family of Service

### Liberty Communities



### Liberty Life Services



## Building Resilient Individuals & Communities

### Volunteer Contributions



**995**

Total Number of Volunteers

**\$635,267**

Total Estimated Dollar Value of Volunteer Hours Served

### Total Lives that Liberty Impacts through:

**8,972**

Direct Service

**25,969**

Community Outreach

**995**

Volunteers

**35,936**

Grand Total

### Organizational Dollars to Continue Services where Shortfalls Exist



**\$900,234**

Benevolent Care



**\$11,610,315**


Unreimbursed Medicare and Medicaid Costs



**\$35,122**

Social Service Subsidies (LCFS and LCS)

# OUR DONORS OUR HEROES



**YOUR GIFTS TO LIBERTY  
& OUR FAMILY OF SERVICES  
MAKE A WORLD OF DIFFERENCE  
TO THOSE WE SERVE.**

**WE ARE DEEPLY GRATEFUL TO ALL OF OUR DONORS  
AND HAVE LISTED THOSE WHO CONTRIBUTED \$100 OR MORE DURING OUR  
LAST FISCAL YEAR. WE ALSO ACKNOWLEDGE THOSE OF YOU WHO MADE YOUR  
GIFTS ANONYMOUSLY AND ARE NOT LISTED ON THE FOLLOWING PAGES.**



# \$25,000 AND ABOVE

**Trust of Albert G. Bauer**  
**Mr. and Mrs. James B. Scott**  
**The Estate of Ruth B. Treadway**

## \$10,000 – 24,999

The Estate of Esther Bonnet  
Mr. and Mrs. James H. Brenneman  
Mr. and Mrs. Frank Ducato  
Mrs. Mary Ellen Hostetter  
Mr. and Mrs. Robert W. Keddle, Jr.  
Northeastern Pennsylvania  
Synod - ELCA  
Dr. Keiko M. Ross  
Sodexo Senior Living  
St Paul Evangelical Lutheran,  
Church Glenside  
Mr. and Mrs. David W. Stettler

## \$5,000 – 9,999

Mrs. Patricia A. Bruner  
Contract Pharmacy Services, Inc.  
Dr. Luanne B. & Mr. Barrett Fisher  
Mr. Charles M. Gingrich  
Johnson, Kendall & Johnson, Inc.  
Mr. and Mrs. Chuck Krueger  
Mrs. Joyce Meyers  
Mrs. Linda M. Morrow  
St John Lutheran Church Emmaus  
St John Lutheran Church Nazareth  
Thrivent Choice Dollars  
Trust of Joanna B. F. Schlechter  
West Berks Mission District

## \$2,500 – 4,999

Bank of America  
Mr. and Mrs. Jim Becker  
Mr. and Mrs. Gerald H. Beil II  
Beneficial Bank  
BLBB Charitable  
Mr. and Mrs. Robert D. Bortz  
Ms. Laura Brewer, Esq.  
Mr. and Mrs. Ronald Coder  
Mrs. Beverly Collier and Mr. William Campbell  
Mr. and Mrs. David DeLuca  
Mr. and Mrs. Richard H. Erb  
Evangelical Lutheran Church in America  
Mrs. Ruth I. Gabel  
Mr. and Mrs. James B. Himler  
Industrial Mechanical Contractors, Inc.  
InFaith Community Foundation  
Jaymar Foundation  
Joseph and Anna Evrard Fund  
The Scholler Foundation  
Mrs. Barbara Sklar  
Southeastern Pennsylvania Synod - ELCA  
Mr. Richard W. Stephan  
Mr. and Mrs. Joe Tornetta  
Weisenberg Lutheran Church, New Tripoli



## \$1,000 – 2,499

Asociación Puertorriqueños en Marcha  
Bachman, Kulik & Reinsmith  
Funeral Home  
Bean Memorial Fund  
Mr. & Mrs. Sterling Bloss  
Ms. Linda Breckenridge  
Mr. and Mrs. Roberto M.  
Buchheister  
Calvary Lutheran Church,  
West Chester  
Centre Foundation  
Copernicus Society of America  
Mr. and Mrs. Johnny F. Corrado  
County of Montgomery  
Mr. Jacob Deutsch  
Mr. William Durham  
Dr. and Mrs. Paul F. Engstrom  
Evangelical Lutheran Church  
of the Advent  
Faith Lutheran Church Whitehall  
Good Shepherd Lutheran Church,  
Easton  
Grace Lutheran Church, Belfast  
Mr. and Mrs. William Graeff  
Mr. and Mrs. Peter Gutekunst  
Mr. Donald T. Hawkins  
Henrietta Tower Wurts Memorial  
Holy Cross Lutheran Church,  
Bethlehem  
Hope Lutheran Church, Tatamy  
The Reverend and Mrs. Fred Hopke  
Mr. Richard W. Hoy, Esq.  
J. S. Burkholder Funeral Home, Inc.  
Mrs. Catharine K. Keim  
Jordan Lutheran Church, Orefield  
Little Tower Foundation  
Ms. Janet L. Lorenzon  
Mrs. Joan and Mr. Kevin Myers  
NFP Lincoln Benefits Group  
PCA Industrial & Paper Supplies, Inc.  
Mrs. Dorothy Pieringer  
Mr. and Mrs. David J. Rights  
Ms. Susan Rosen  
Mr. and Mrs. Frank Roth

Mrs. and Mr. Helene Roth  
Mr. Ronald Scaramuzza  
Ms. Elizabeth H. Scott  
Ms. Irene Segletes  
Sing for America Foundation  
Sliwinski Floor Covering Services, Inc.  
Mr. William R. Snell, Esq.  
St John Lutheran Church, Fogelsville  
St Paul Lutheran Church,  
Breinigsville  
Star of Bethlehem Lutheran Church  
Mr. and Mrs. Dennis L. Steffy  
Mr. and Mrs. Walter J. Stiver, Jr.  
St John Lutheran Church Coplay  
The Franklin Institute  
Ms. Barbara D. Treadwell  
Trinity Lutheran Church, Lehighton  
Union Electric Contracting Company  
Warfel Construction Company  
Zion Lutheran Church, Northampton

## \$500 - 999

Arndts Lutheran Church, Easton  
Ms. Paula Boyer  
Mr. Glen D. Boyle  
Briggs Bunting & Dougherty  
(BBD, LLP)  
Mr. and Mrs. David P. Brown  
Mr. David Caddick  
Mr. and Mrs. John Catino  
Christ Lutheran Church, Niantic  
Mr. and Mrs. John T. Corrado  
Mr. and Mrs. W. Laurence Davis  
Ms. Sandra D. Deiter  
Mr. and Mrs. Don and Susan  
Duckwitz  
Faith Lutheran Church, Reading  
Mr. and Mrs. Fred Ferguson  
Ms. Georgyn Fest  
Mrs. Heather F. Fleck  
Mr. and Mrs. Earl R. Freese, Jr.  
Ms. Kathryn Garnett  
The Reverend Kay & Mr. James  
Hollinger  
Holy Trinity Evangelical  
Lutheran Church, Abington

Mr. Adam Jacob  
Ms. LaVerne Jones  
Leibensperger Funeral Homes, Inc.  
LMEPAC  
Mr. and Mrs. Louis J. Lombardi  
Ludwick Funeral Homes, Inc.  
Lutheran Advocacy Ministry in PA  
Mrs. Helen A. Manfull  
The Reverend and Mrs. Wayne A.  
Matthias-Long  
Ms. Julia E. Menzo  
Minerals Technologies Inc.  
Mr. and Mrs. Joseph Moore  
Morrell Funeral Home, Inc.  
Mr. and Mrs. Richard J. Neddenriep  
Ms. Catherine Neil  
Ms. Dolores Redner  
Reformation Lutheran Church, Media  
Mr. and Mrs. Frederick G. Rummel  
Mr. and Mrs. John M. Ruse  
Shepherd of the Hills Lutheran  
Church, Whitehall  
St. James Lutheran Church,  
Coopersburg  
St. John Lutheran Church, Slatington  
St. Mark Lutheran Church, Bethlehem  
St. Paul Lutheran Church, Dallas  
St. Paul Lutheran Church, Summer Hill  
St. Peter Lutheran Church,  
Lafayette Hill  
St. Peter's Lutheran Church, Women  
The Benevity Community Impact Fund  
The Evangelical Lutheran Church of  
the Resurrection  
The Phillies  
Trinity Evangelical Lutheran Church,  
Lansdale  
Ms. Gwendolyn R. Webster  
The Reverend and Mrs. Stephen J.  
Weisser  
Mrs. Katrina K. and Mr. David A. Wise  
Mr. and Mrs. Clifford Wurster  
Mr. and Mrs. David H. Zieger  
Mr. and Mrs. Richard E. Zimmerman, Jr  
Zion Stone Church of W. Penn Twp.



## Liberty's Mission in Action

Donations Made July 1, 2018 - June 30, 2019

# \$250 - 499

Mr. and Mrs. Dick Aten  
Atlantic Refrigeration  
Equipment Company, Inc.  
Dr. and Mrs. Steven R. Auvil  
Mr. Robert Barkhau  
Mr. and Mrs. John M. Barnum  
Ms. Hennrietta Baylor  
Mr. Thomas D. Bennett, Jr.  
Mr. and Mrs. John Black  
Mr. and Mrs. Al Blackadar  
Mrs. Beatrice F. Blackadar  
Mr. Scott Burgess  
Burgi 627, Inc.  
Mr. and Mrs. Joseph Calarco  
Christ Lutheran Church,  
Kulpsville  
Ciavarelli Family  
Funeral Homes  
Mrs. Patty Cline  
Mr. and Mrs. Edward C. Cool  
Mr. and Ms. Jon Corbin  
CRH Catering Co., Inc.  
Mr. Thomas Cuddahy  
Mr. John A. Curran  
Diakon Lutheran Social  
Ministries  
Mr. and Mrs. Roger Dietz  
Mr. Gary Dolan  
Mr. and Mrs. Henry Ebner  
Mr. and Mrs. Alan and Linda  
C. Eickhoff  
Ms. Patricia El  
Mr. and Mrs. Donald H.  
Elsenbaumer  
Fireside Bar and Grille  
Ms. Maranda Gates  
Grace Lutheran Church,  
Macungie  
Greenview Landscaping  
Mr. George Hargrove  
Immanuel Lutheran Church,  
Philadelphia  
Jerusalem Lutheran Church,  
Sellersville  
Mrs. Teresa and Mr.  
Michael Kane  
Mrs. Beverly E. Kiehl  
Mr. Charles R. King  
Mrs. Ruth C. Kistler  
Ms. Laurie A. Knittel

Mr. and Mrs. John D. Ladley  
Mr. Nolan LeBlanc  
Ms. Lois I. Leffler  
Mr. and Mrs. Duane Leitzell  
Mrs. Mary Jean MacNeil  
Mr. and Mrs. Robert  
MacQueen  
Ms. Elizabeth Meehan  
Ms. Eileen Micklin  
Mr. and Mrs. Chuck Naginey  
The Reverend Paulette K.  
Obrecht and Mr. John Obrecht  
Mr. and Mrs. Wesley O'Brien  
Mrs. Dana and Mr. Mark  
O'Donnell  
Mr. Paul Olivett  
P. J. Whelihan's Bar and Grill  
Parish Secretaries Seminar  
Ms. Alanna Parsons  
Peace Tohickon Lutheran  
Church, Perkasie  
Ms. Caroline F. Pierce  
Prince of Peace Lutheran  
Church, Johnsonville  
Redeemer Lutheran Church,  
Allentown  
Mr. and Mrs. Anthony Resch  
Schantz Funeral Home, PC  
Dr. and Mrs. Scott T. Scheirer  
Ms. Kathleen C. Sengle  
Ms. Marie Slowey  
Mrs. Trudy Smith  
Mrs. Dena Smith  
St. Andrew Lutheran Church,  
Easton  
St. James Lutheran Church,  
Hobbie  
St. John Lutheran Church,  
Ringtown  
St. John Lutheran Church,  
Stroudsburg  
St. John Lutheran Church,  
Whitehall  
St. Luke Lutheran Church,  
Allentown  
St. Matthew Lutheran Church,  
Lehighon  
St. Paul Evangelical Church,  
Fleetwood  
St. Paul Lutheran Blue Church,  
Coopersburg  
St. Stephen Lutheran Church,  
Bethlehem

Mr. and Mrs. Chris Tatreau  
Mrs. Elizabeth A. Tiemeyer  
The Reverend John W.  
Tomlinson  
Mrs. Carolyn S. Tothoro  
Trinity Lutheran Church,  
Perkasie  
Ms. Nancy Twomey  
Union Evangelical Lutheran  
Church, Schnecksville  
Ms. Janet L. White  
Willig, Williams & Davidson  
Attorneys-At-Law  
Ms. Nancy Wolf  
Your Cause Global  
Good Network  
Mr. and Mrs. Paul C. Zieger

# \$100-249

Act II Playhouse  
Aerodrome Hair Salon  
Mr. and Mrs. Ray Angelo  
Mr. and Mrs. Joven Q. Arcalas  
Ms. Effie Arntz  
Mr. and Mrs. Paul D. Balascki  
Mr. and Mrs. Joseph Barnes Sr.  
Mr. Robert Barsky  
Mr. William O. Bast  
Mr. and Mrs. John F. Beam  
Mr. and Mrs. Robert Beckett  
Mr. Randy Bednarz  
Mr. William G. Bergan  
Mr. and Mrs. David W. Berkel  
Ms. Shelley Blumstein  
Mr. and Mrs. Jason W. Bowers  
Mrs. Constance L. Bowers-  
Capen  
Ms. Dacy Boyd  
The Reverend and Mrs.  
Paul D. Braden  
Mr. and Mrs. John Branton  
Mr. and Mrs. Thomas J.  
Brennan  
Ms. Susan Brenner  
Mrs. Elizabeth S. Brndjar  
Mr. and Mrs. George A. Brown  
Ms. Becky Butler  
Mr. and Mrs. David Butt  
BWM Global Inc.  
Mrs. and Mr. Cynthia Cannon  
Ms. Julie Cassel  
Mr. Vincent Cassidy

Mr. and Mrs. Joseph F.  
Castellino  
Christ Evangelical Lutheran  
Church, Oreland  
Christ Lutheran Church,  
Mahanoy City  
Mr. and Mrs. James Cimbak  
Ms. Alexandria Cirko  
Commonwealth of  
Pennsylvania  
Ms. Linda Covert  
Ms. Andrea Cwiek  
Mr. and Mrs. Lawrence E.  
Daurelle  
Mr. and Mrs. Marion Deppen  
Mr. and Mrs. Jim Derrah  
Dettra Memorial Trust  
Mr. and Mrs. Philip F. Diehl  
Mr. and Mrs. John A. Dilts  
Mr. and Mrs. Ronald H. Dorn  
The Reverend Ruth and Mr.  
Richard L. Doty  
Ms. Amy Drakely  
Ms. Melissa Duckwitz  
Mr. Ben Elias  
Ms. Susannah Erinle  
Exelon Corporation  
Mr. Joseph Feola  
Ms. Rosemary Ferrero  
Mrs. Lena Fishman  
Ms. Janet Fitzgibbon  
The Reverend and Mrs. Fred S.  
Foerster  
Mr. and Mrs. Timothy B. Foley  
Mr. and Mrs. Denbeigh G.  
Forbes  
Mr. and Mrs. Ernest Fox  
Mr. Mitchell W. Francis  
Friedens Lutheran Church,  
Center Valley  
Mr. Jerry Fulwider  
Ms. Nancy Gamble  
Mr. Julian Garber  
Mrs. June Gaskins  
Mr. and Mrs. Paul Gazzo, Jr.  
Mrs. Helen A. Ginsburg  
Ms. Nancy Glace  
Grace Evangelical Lutheran  
Church of Pottstown  
Grace Lutheran Church,  
Allentown  
Grace Lutheran Church,  
Wyndmoor  
Ms. Sara Gray  
Mr. and Mrs. Ted A. Greve  
Ms. Lastenia Grieser



## UNLIMITED COMPASSION

**THIS SUPERPOWER IS DRAWN FROM  
GENEROSITY AND KINDNESS USED TO CREATE  
SOLUTIONS FOR MEETING THE NEEDS OF OTHERS.**

Mr. and Mrs. Douglas B. Groff  
Ms. Ethy Gross  
Mr. and Mrs. Richard Grossman  
Ms. Joanna Gubernick  
Mr. Nicholas R. Guilbert III  
Hall & Associates  
Mr. and Mrs. Richard S. Hamilton  
Ms. Barbara B. Hannon  
Mr. Andrew J. Harrington  
Mr. and Mrs. William J. Heaney  
Mr. and Mrs. Edgar Hendler  
Mr. William M. Herrlich  
Mr. and Mrs. Donald C. Hetzel  
The Reverend and Mrs. David F. Hill  
Holy Trinity Lutheran Church  
Slatedale  
The Reverend Donna M. House  
Mr. and Mrs. John R. Howe  
Mr. and Mrs. Michael Howe  
Huffs Union Church, Alburtis  
Jerusalem Lutheran Church,  
E Salisbury  
Jerusalem Western Salisbury  
Church, Allentown  
Mrs. Sally U. Johnson  
Mr. and Mrs. Stuart A. Johnson  
Mr. James Johnston  
Mrs. Margaret S. Johnston  
Mr. and Mrs. Arthur S. Keinert  
Ms. Laura Kemp  
Mr. Roger P. Kent  
Mr. and Mrs. William Key  
Mr. and Mrs. John W. Kirst  
Ms. Eleni Konugres  
Krieger & Associates  
Architects  
Ms. Donna Lanzetta  
Law Office of Theresa Ann  
Hartzell

Mr. Duanne Leitzell  
Mr. and Mrs. John P. Leneweaver  
Mr. and Mrs. Robert J. Lynn  
Ms. Janice L. Manwiller  
Ms. Sandra Martin  
Ms. Arlene C. Masi  
Ms. Madelyne McKee  
Mr. and Mrs. Austin Meehan  
Mr. Edwin W. Melvin  
Mr. and Mrs. Steven Merritt  
Mr. and Mrs. Arthur F. Mertz  
The Reverend and Mrs. Joseph Molnar  
Mr. and Mrs. Brian Moyer  
Ms. Nancy Myers  
Ms. Lena Nassar  
Mr. and Mrs. Conrad J. Nelson  
Ms. Carol R. Neumayer  
Mr. Scott Nicholas  
Mr. and Mrs. John J. O'Brien  
Mr. Bill Orchow  
Mr. and Mrs. Nick Panara  
Ms. Jennifer Pease  
Pennsylvania Department of  
Environmental Protection  
Mr. and Mrs. Gale Peters  
Mrs. Patricia R. Pincus  
Mr. and Mrs. Ronald P. Plantone  
Mr. and Mrs. Herbert R. Popp  
Mr. and Mrs. Chris Powell  
Ms. Maureen E. Pugh  
Mr. and Mrs. Samuel M. Puleo  
Quantum Global Technologies  
Resurrection Lutheran Church,  
Horsham  
Resurrection Lutheran Church,  
Horsham, WELCA  
Mr. Richard Riddle  
Mrs. Bethann E. Ritter-Snyder  
Rob and Emily Zuppert  
Ms. Angela Roberts

Ms. June R. Robinson  
Ms. and Mr. Meryl Rose  
Mr. Alfred F. Rotelle Jr.  
Mrs. Betty A. Rothrock  
Dr. Dean M. Ruday  
Ms. Brenda Ruotolo  
Dr. Kenneth G. Ryder, Jr.  
Mr. John Ryskalczyk  
Salem Bellemans Lutheran  
Church, Mohrsville  
Salem St. Paul Lutheran  
Church, Kresgeville  
Ms. Kathleen Salmon  
Ms. Michele M. Sapita  
Mr. Joseph Sarappo  
Mr. and Mrs. Peter C. Satterthwaite  
Ms. Diane Schettone  
Mr. and Mrs. Lowell E. Schultz  
Mrs. Jeanette A. Schumacher  
SEPA ELCA Delaware  
Conference  
Mr. and Mrs. Ahmed Shafik  
Mr. John S. Shaw  
Mr. Bradley Smith  
Mr. and Mrs. Donald A. Smith  
Mrs. and Mr. Maria Smith  
Mr. Adam J. Snyder  
Mr. and Mrs. Jeffrey C. Snyder  
Dr. and Mrs. Steven M. Snyder  
Ms. Christina Speh  
St. James Lutheran Church,  
Geigertown  
St. John Lutheran Church,  
Gernants  
St. John Lutheran Church,  
Richlandtown  
St. Paul Evangelical Lutheran  
Church, Ardmore  
St. Paul Lutheran Church,  
Easton  
St. Paul Lutheran Church,  
Lobachsville  
St. Paul's Lutheran Church  
St. Johns Lutheran Church  
Womens Group

Stanley W. Cooper Inc.  
Plumbing  
Ms. Krista Stapleton  
Ms. Leslie Stickley  
Ms. Mary A. Stilo  
Ms. Alicia Tarpeh  
Mr. and Mrs. Alfred H. Taylor, Jr.  
Mrs. Emma Taylor  
Ms. Gail Taylor  
Mr. Jonathan R. Testa  
The Reverend William M. and  
Dr. Leta Thompson  
Mr. and Mrs. Paul W. Todd  
Mr. and Mrs. Augustus J. Tornetta  
Mr. and Mrs. David R. Torrence  
Trinity Lutheran Church  
Lansford  
Mrs. Jane B. Umstead  
University Lutheran Church of  
the Incarnation  
Upper Bucks Conference - SEPA  
Utility Line Services, Inc.  
Mr. and Mrs. Gijbert  
Vanderplas  
Mr. and Mrs. Joseph E. Vincent  
Mr. and Mrs. Bruce Waechter  
Mrs. and Mr. Lois Anne Weber  
Ms. Jane Weir  
Mr. and Mrs. Douglas J. Wendell  
Ms. Sarah T. Werntz  
Mrs. Jean A. White  
Mr. and Mrs. Norman T. Wilde, Jr.  
Ms. Catherine Williams  
Ms. Caroline R. Willms  
Ms. Kathleen Wright  
The Reverend and Mrs. David  
M. Young  
Dr. and Mrs. John Zaro  
Zion United Lutheran Church,  
Brodheadsville  
Ms. Emily Zuppert

**THANK YOU**

**FOR YOUR HEROIC  
COMPASSION!**



## President's Circle

Our President's Circle recognizes individual donors whose total lifetime giving is \$10,000 or more. Their investments support today's programs and activities as well as build the foundation for the future.

Mr. Allen  
Apter • Mr. and Mrs. William E.  
Babcock • Mr. and Mrs. Charles Baer • Mr. and  
Mrs. Wister S. Baisch • Mr. and Mrs. John M. Barnum • Mr.  
Owen M. Bastian • Mrs. Barbara & Mr. Jim Becker • Mr. Gerald and  
Mrs. Sally Beil • Ms. Karen Bergey • Mrs. Helene D. Bocclair • Mrs. Beverly and  
Mr. Robert Bortz • Mr. and Mrs. F. Glenn Breen, Jr. • Mr. and Mrs. James H.  
Brenneman • Mr. and Mrs. J. Curtis Brewer • Mrs. Patricia A. Bruner • Mr. and Mrs. Robert  
L. Byers • Mr. and Mrs. Ronald Coder • Mrs. Beverly Collier and Mr. William Campbell • Mr. and Mrs.  
Kenneth Daly • Mr. Peter I. Daniele, Esq. • Mr. and Mrs. Lawrence E. Daurelle • Mrs. Paul V. DeLomba Sr. •  
Mr. and Mrs. David DeLuca • Mr. and Mrs. Roger Dietz • Mr. Seibert L. Dorner • Mr. and Mrs.  
Frank Ducato • Ms. Virginia M. Duffy • Mr. and Mrs. Wendell Ehinger • Dr. and Mrs. Paul F. Engstrom •  
The Reverend William G. Erat and Mrs. Linda Erat • Mr. and Mrs. Richard H. Erb • Dr. Luanne B. and  
Mr. Barrett Fisher • Mrs. Heather F. Fleck • Dr. and Mrs. George Flickinger • Mr. Joseph French •  
Ms. Nancy Gamble • Mr. and Mrs. Thomas A. Gasper • Mr. Charles M. Gingrich • Mr. Richard N. Gitlen •  
Mr. Robert H. Gotwalt Jr. • Mr. and Mrs. Peter Gutekunst • Mrs. Barbara Hartenbauer • Mrs. Carol Hays • Mr. and  
Mrs. John O. Heck • Mrs. Barbara and Mr. Donald Hickey • Mr. and Mrs. James B. Himler • The Reverend Kay and  
Mr. James Hollinger • The Reverend and Mrs. Fred Hopke • Mr. Richard W. Hoy, Esq. • Mr. and Mrs. Robert Jacobe •  
Mr. Robert J. Johnston • Ms. LaVerne Jones • Mrs. Marcia Kavanagh • Mr. and Mrs. Robert W. Keddle, Jr. •  
Mr. Philip G. Keeney • Mrs. Catharine K. Keim • Mr. Charles R. King • Mr. and Mrs. John W. Kirst • Mr. and Mrs. Richard  
D. Kishbaugh • Mr. Robert L. Klotz • Mr. and Mrs. George E. Koch • Mr. Richard H. Kustin • Mr. and Mrs. Ronald  
G. Larson • The Reverend and Mrs. Russell M. Long • Mr. and Mrs. John MacChesney • Mrs. Helen A. Manfull •  
Mr. and Mrs. Robert B. Maynard • Mr. and Mrs. Barnes McCormick • Mr. and Mrs. Joseph J. Miller • Mrs. Linda M.  
Morrow • Mr. and Mrs. Charles L. Myers • Mrs. Joan and Mr. Kevin Myers • Mr. and Mrs. Chuck Naginey • Mr. and  
Mrs. Francis O'Connor • Mr. Axel K. Olsen • Mr. Phillip and Mrs. Assunta Parker • Ms. Karen Parnes • Mr. Almarin  
Phillips • Ms. Annetta Pierce • Mr. and Mrs. Steven Pitzenberger • Mr. Nicholas N. Pournader, PhD • Mrs. Richard  
W. Reimet • Mr. and Mrs. Dennis Ricker • Mr. and Mrs. David J. Rights • The Reverend Dr. and Mrs. Dennis  
S. Ritter • Mr. and Mrs. A. C. Roemhild • Dr. Keiko Miwa Ross • Mr. and Mrs. Frank Roth • Mr. and Mrs.  
Peter C. Satterthwaite • Mr. David Schirm • Mr. C. Glenn Schueler • Mrs. Joan Schuman • Ms. Elizabeth  
H. Scott • Mr. and Mrs. James B. Scott • Mrs. Morton Sklaroff • Mr. Michael Slotznick, Esq. • Mr. and Mrs.  
Lawrence M. Smith • Mrs. Sally and Mr. Donn Spear • Mrs. J. Patricia Stanley-Lackman and Dr. Thomas  
Lackman • Mr. Dennis L. Steffy • Mr. John Steimer • Mr. Richard W. Stephan • Mr. and Mrs.  
David W. Stettler • Mr. and Mrs. Max Stoner • Mr. and Mrs. Alfred H. Taylor, Jr. • Mr. and  
Mrs. Richard K. Taylor • Mr. and Mrs. Bruce Waechter • Mr. and Mrs. Paul J. Wangsness •  
Ms. Gwendolyn Webster • Ms. Sarah T. Werntz • Ms. Denise R. Winarchick •  
Mr. and Mrs. Philip Winsor • Mrs. Katrina and Mr. David Wise • Mr. and Mrs.  
Cliff Wurster • Mr. and Mrs. Jere A. Young • Mr. and Mrs. David  
H. Zieger • Mr. and Mrs. Paul C. Zieger • Mr. and  
Mrs. John F. Ziegler

**Note:** Some donors in the President's Circle wish to remain anonymous, thus we have respectfully excluded their names.

# YOUR IMPACT



**“ I’ve come to believe  
that if you do good,  
it’s contagious,  
and other people will do good as well.”**

*~ Dr. Carl Mogil, resident at The Hearth at Drexel*

## **Because of your support...**

Liberty Lutheran empowers 8,972 older adults  
through compassionate care and service that redefines aging  
and promotes improved health and wellbeing.

**Thank You**





# Legacy Society



Mr. and Mrs. Charles Baer • Ms. Karen Bergey • Ms. Helene D. Bocclair • Mrs. Esther Bonnet\* • Mr. and Mrs. F. Glenn Breen, Jr. • Mr. and Mrs. James H. Brennehan • Mrs. Beverly Collier and Mr. William Campbell • Mr. and Mrs. Lawrence E. Daurelle • Mrs. Helen R. Davis • Mr. and Mrs. Wendell Ehinger • Dr. Luanne B. and Mr. Barrett Fisher • Mr. and Mrs. Thomas A. Gasper • Ms. Joan Gaudensky\* • Ms. Annie C. Harvey • Mr.\* and Mrs. John O. Heck • Mrs. Barbara and Mr. Donald Hickey • Mrs. Bridgit and Mr. Brian Holly • Mrs. Karen House • The Reverend Patricia H. Johnson • Mrs. Marcia Kavanagh • Mr. and Mrs. Robert W. Keddie, Jr. • Mr. Philip G. Keeney • Mrs. Catharine K. Keim • Mr. and Mrs. George E. Koch • Ms. Verna La Pella\* • Mr. and Mrs. Ronald G. Larson • The Reverend and Mrs. Russell M. Long • Mrs. Helen A. Manfull • Mr. Robert B. Maynard\* • Mr. and Mrs. Harold I. Myers • Mr. and Mrs. Chuck Naginey • Mr. Phillip and Mrs. Assunta Parker • Ms. Annetta Pierce • Mr. and Mrs. Steven Pitzenberger • Mr. Nicholas N. Pournader, PhD • Mr. C. Glenn Schueler\* • Mr. Roger Sovocool • Mr. and Mrs. Max Stoner • Mrs. Ruth B. Treadway\* • Mrs. Janet and Mr. Bruce Waechter • The Reverend and Mrs. William P. Welther • Mr. Robert F. and Mrs. Elaine B. Whitford • Ms. Caroline Willms • Mr. and Mrs. Philip Winsor • The Reverend\* and Mrs. Henry K. Wohlgemuth • Ms. Nancy Wolf • Mr. and Mrs. Cliff Wurster • Mr. and Mrs. Jere A. Young • Mr. and Mrs. Paul C. Zieger

\*deceased

Our Legacy Society recognizes donors who secure the future of Liberty Lutheran with a bequest or life-income gift. Though some donors wish to remain anonymous, the Legacy Society provides us with a way to recognize and thank our donors during their lifetime.

At Liberty newsletter is published by



7002 Butler Pike • Ambler, PA 19002



[libertylutheran.org](http://libertylutheran.org)



## Reduce your 2020 taxes

Consider a gift from...



Appreciated Securities



QCD from IRA  
(Qualified Charitable Distribution)

Gifts must be transferred directly  
to Liberty Lutheran.

**For more information, contact**  
Patty Cline by phone, 267-464-7720,  
or by email [pcline@libertylutheran.org](mailto:pcline@libertylutheran.org)



[artmanhome.org](http://artmanhome.org)  
215-643-6333



[becomingcenter.org](http://becomingcenter.org)  
215-643-9908



[manoratyorktown.org](http://manoratyorktown.org)  
267-488-0398



The Hearth  
..... at Drexel .....

[thehearthatdrexel.org](http://thehearthatdrexel.org)  
610-664-5967

The Village  
AT PENN STATE



[retireatpennstate.org](http://retireatpennstate.org)  
1-800-238-3173



[paulsrun.org](http://paulsrun.org)  
215-934-3000



[libertyathome.org](http://libertyathome.org)  
844-651-5111



[westphilaseniorcenter.org](http://westphilaseniorcenter.org)  
215-386-0379



[lutherancongregationalservices.org](http://lutherancongregationalservices.org)  
267-464-7740



[libertyhospice.org](http://libertyhospice.org)  
844-651-5111